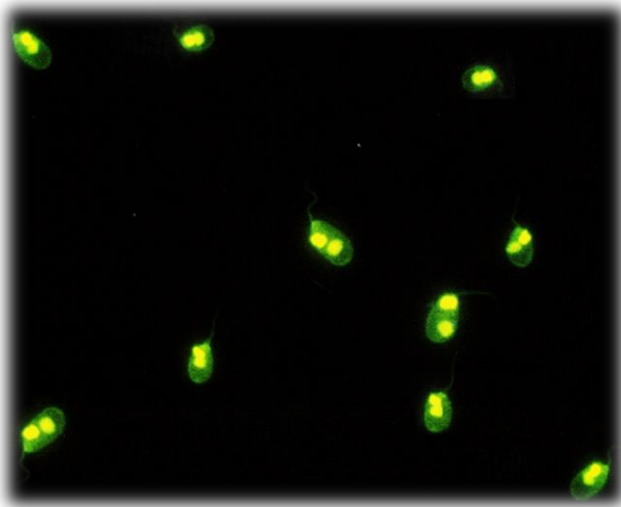


# Indirect Immunofluorescence Workshop

## Introduction

Indirect Immunofluorescence (IFI) is a diagnostic technique that permits to visualize a specific protein or antigen in cells or tissue sections by chemically combining a specific antibody with a fluorescent coloring agent. The adequate understanding of autoimmune responses is of great use in diagnostics, evolution and prognosis of pathologic processes in order to enhance the knowledge and provide an individualized treatment to patients.



## Product

The Rheumatology Department of the *Hospital General Universitario Gregorio Marañón* has developed a workshop in order to update the skills and knowledge of IFI of the doctors working in rheumatology area. The workshop essentially consists of two parts: theory of IFI and hands-on practical exercises in order to internalize the procedures.

The main topics of the workshop:

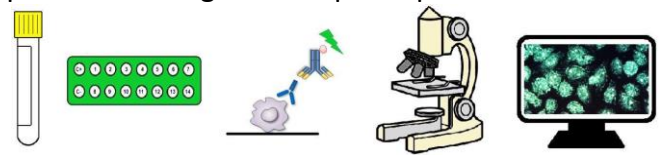
- Theory of IFI.
- Screening.
- Confirmation of autoantibodies.
- Protocols for antigenic identification of patterns and its specificities for different substrates that are typically used: the Human Epidermoid carcinoma strain #2, neutrophils, cell culture of hemoflagellate *Crithidia Luciliae*, as well as the triple substrate of rat's liver, kidney and stomach.
- Marking techniques performed on problematic serums.

## State of Development

The workshop together with all didactic materials is fully developed.

## Advantages

The main advantage of the workshop is that it combines a classical theoretic approach with action based learning that assures the maximum internalization of the acquired knowledge for the participants.



## Application

The workshop is targeted to rheumatologists.

## IPR Position

Registration code of Intellectual Property (copyright) is 16/2014/6112.

## Authors

Larissa Méndez Valor, Diana Hernández Flórez and Francisco Javier López Longo.

## Opportunity

The workshop can be carried out in the *Hospital General Universitario Gregorio Marañón* in Madrid or at the location negotiated. Additionally, all the didactic materials are available to be licensed on demand.